



COMUNE DI SANTOMENNA -SA-

PIANO DI GESTIONE FORESTALE 2019 / 2028

CARTOGRAFIA CATASTALE

coordinamento e direzione tecnica

dott. agr. Eligio TROISI

consulente

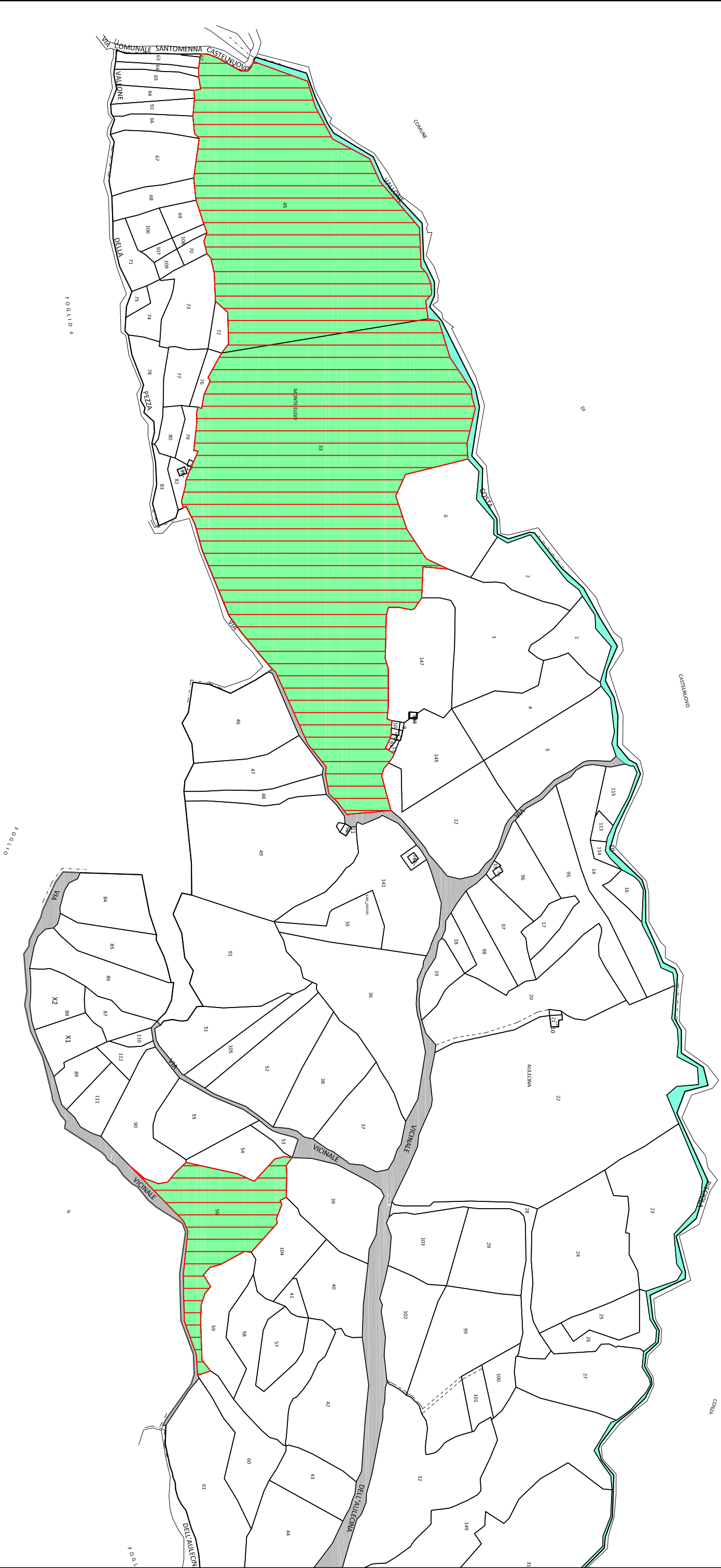
dott. nat. Temistocle CIMMINO

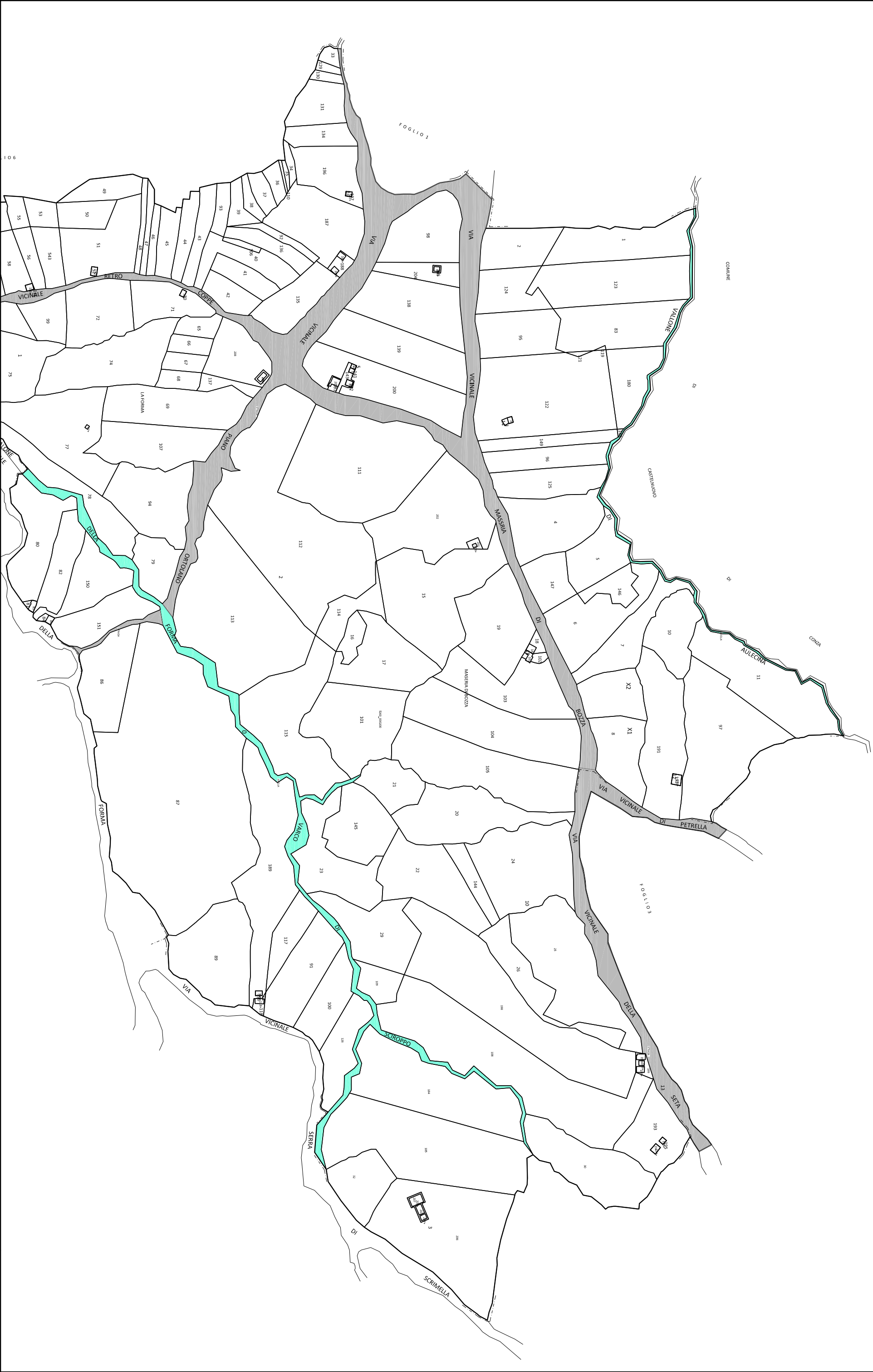
PRIMA STESURA
SETTEMBRE 2017

SECONDA STESURA
FEBBRAIO 2018

TERZA STESURA
MAGGIO 2018

QUARTA STESURA
OTTOBRE 2018





PLANIMETRIA CATASTALE

LEGENDA

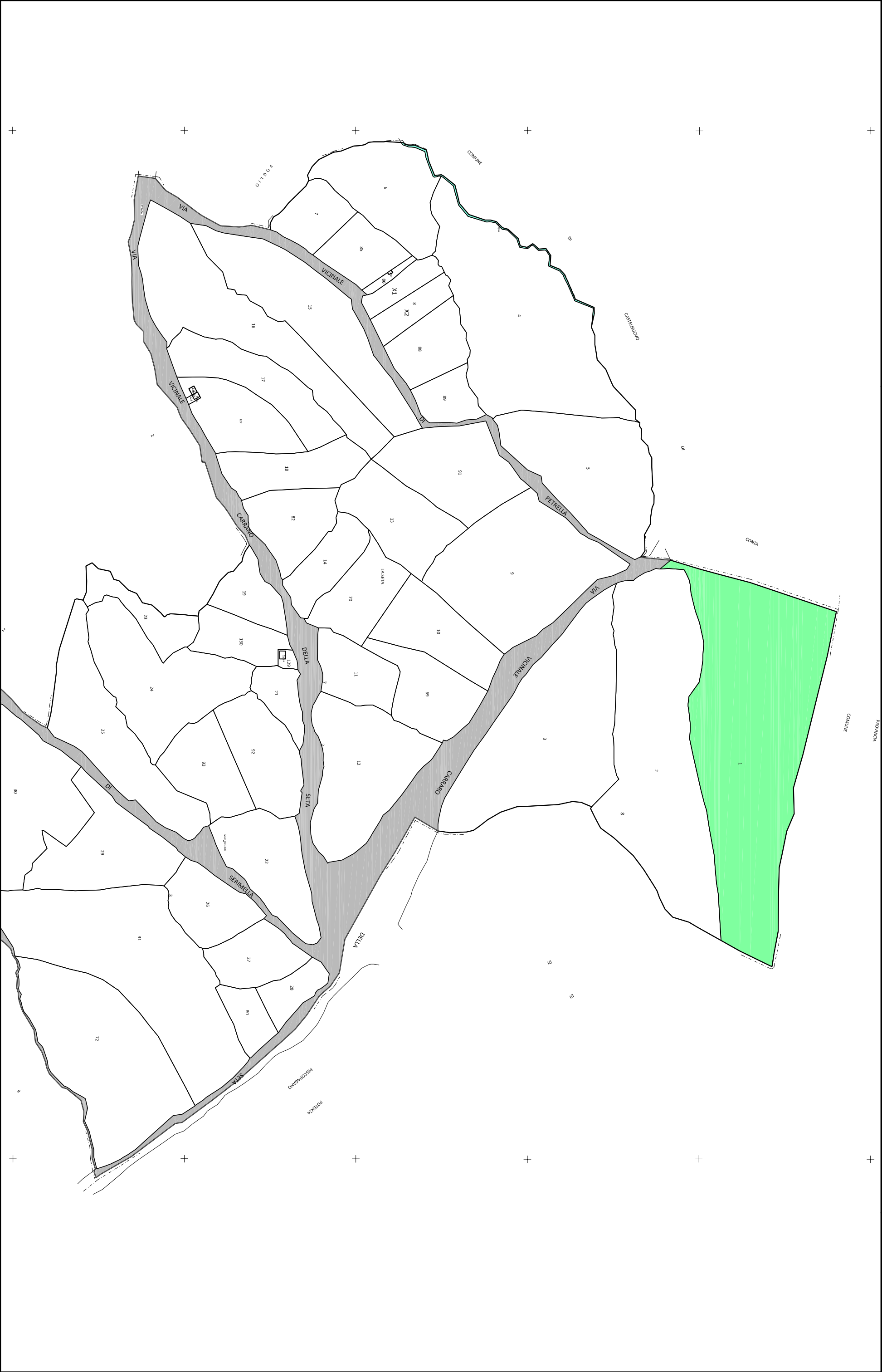
Strade

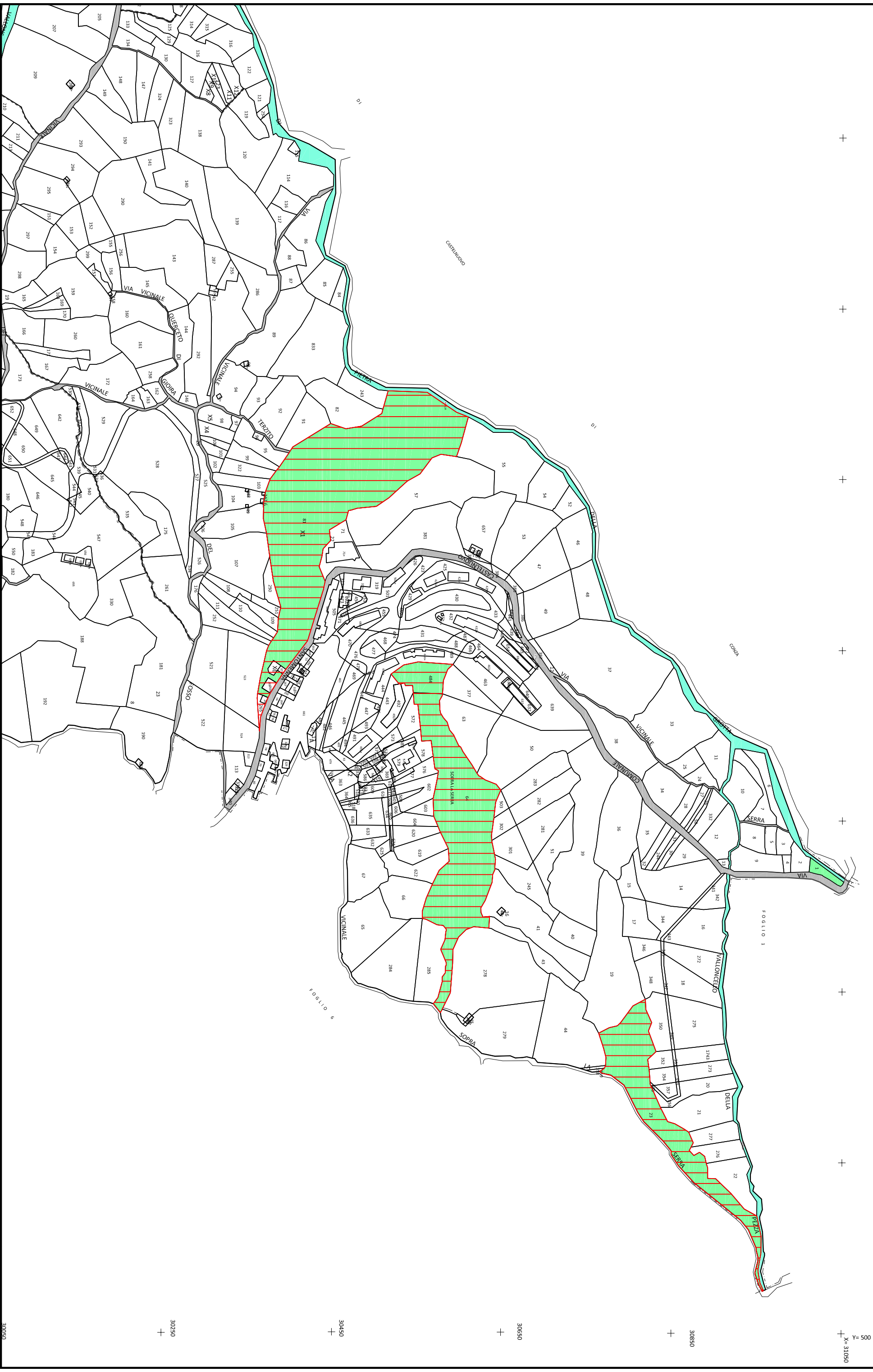
Acque pubbliche

Demanio comunale

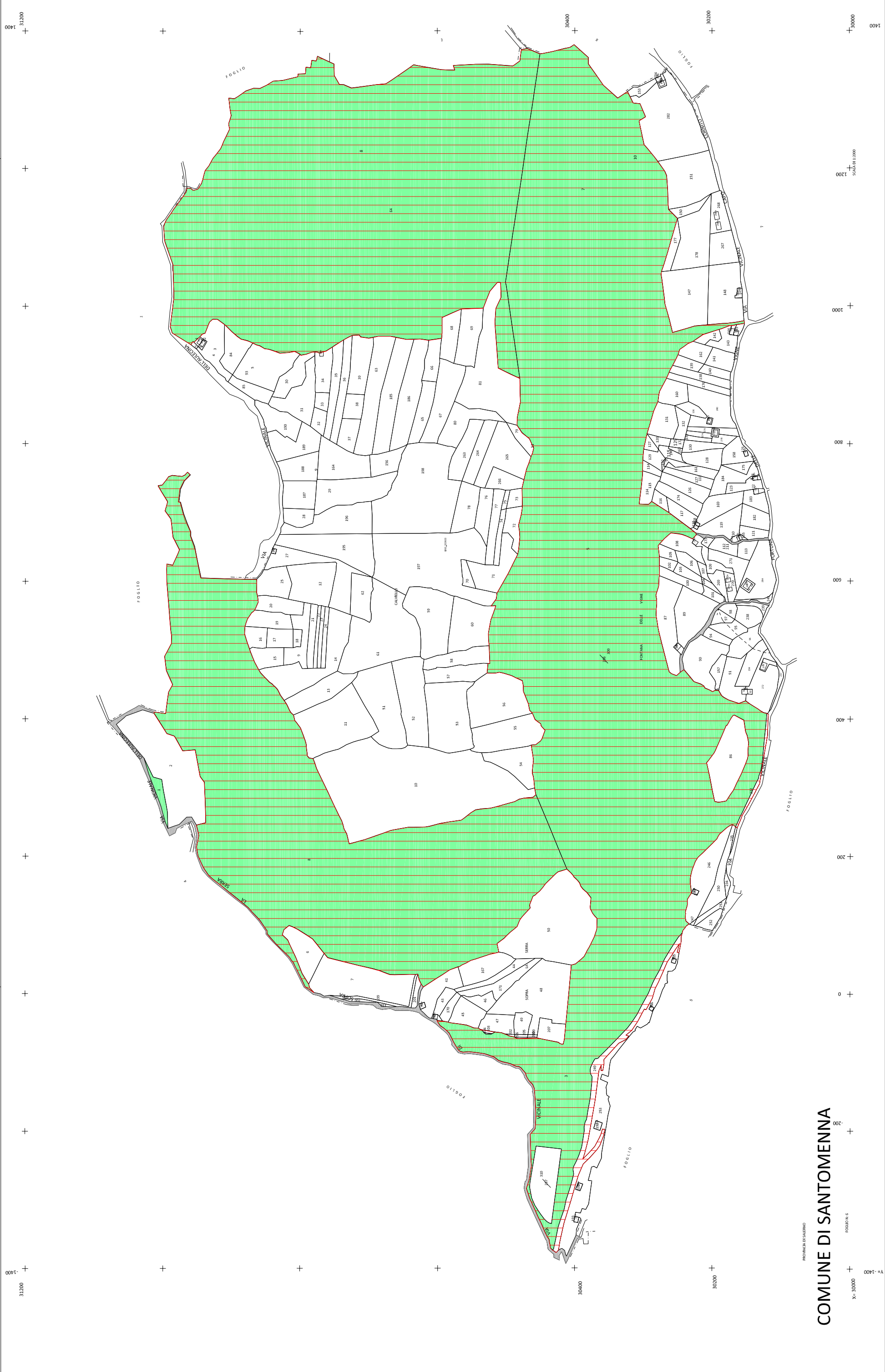
Demanio gravato da usi civici del pascolo e del legnatico

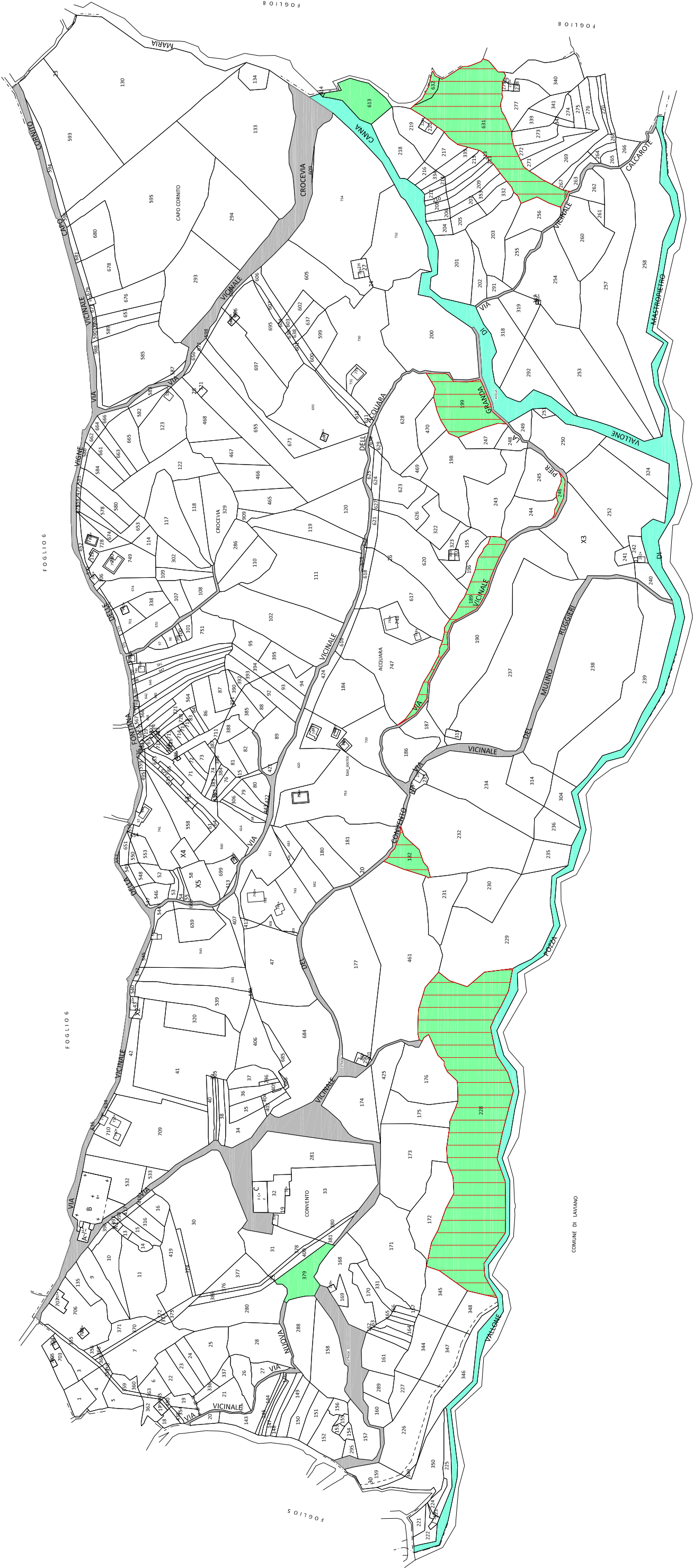
Scala 1:4.000



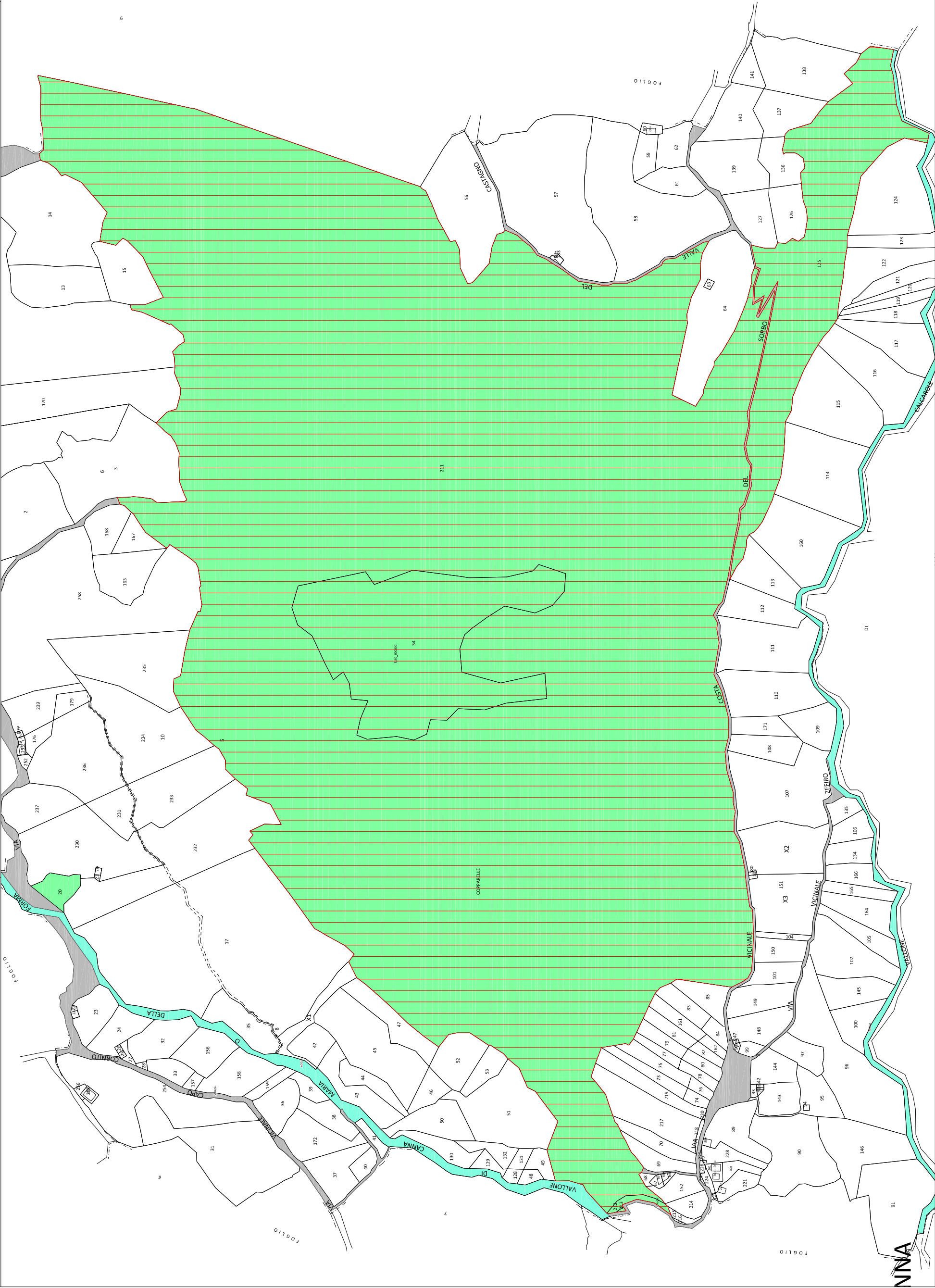


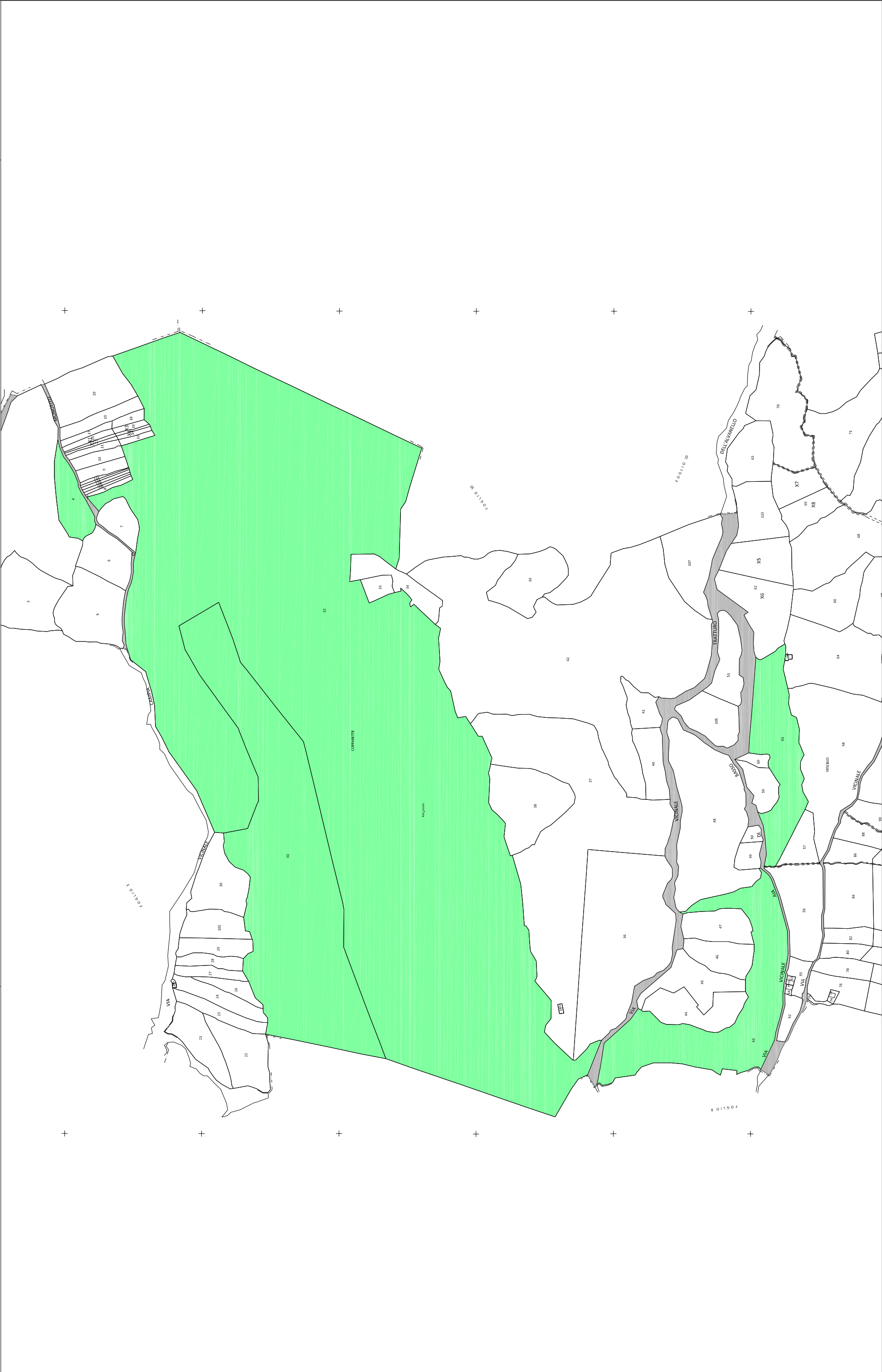


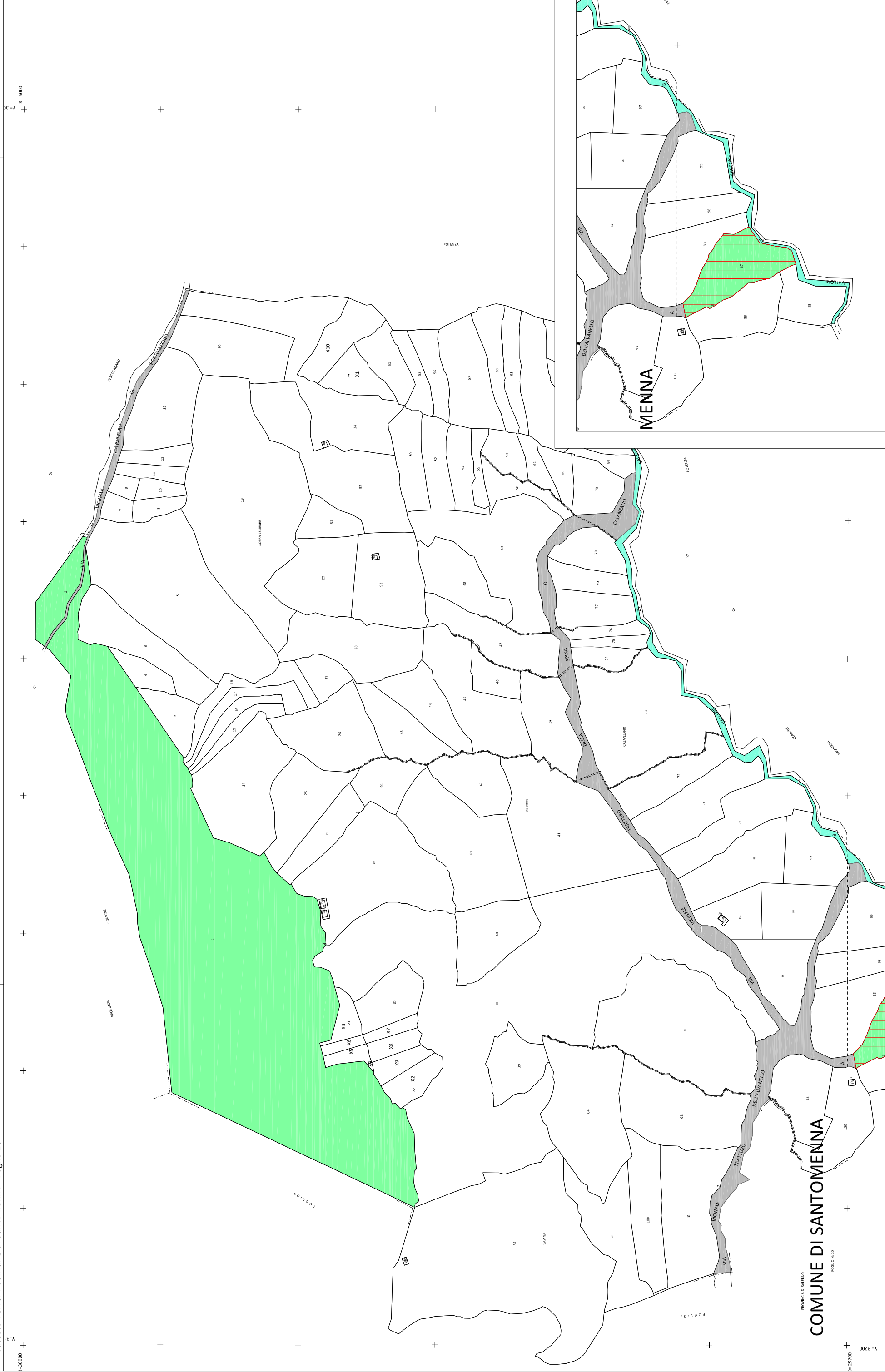




COMUNE DI LAVIANO







Y=900

ORIGINE DELLE COORDINATE

